

1995 Boys' Sweet Sixteen Action

first round

**MONTGOMERY
COUNTY**

VS.

PAINTSVILLE

March 16, 1995

**Rupp Arena
Lexington, Kentucky**

OFFICIAL STATISTICS BOOKLET

OFFICIAL NFSHS BASKETBALL BOX SCORE: *** FINAL ***
 Date: 03-16-95 Site: BOY'S SWEET 16, LEXINGTON

VISITORS (Last Name, First)

NO.	PAINTSVILLE	Tot FG		3-POINT		FT	FTA	Rebounds			PF	TP	A	TO	BLK	S	TIME
		FG	FGA	FG	FGA			OFF	DEF	TOT							
32	SERGEANT, BRAD	2	5	1	3	0	0	1	0	1	1	5	3	0	0	16:52	
34	RATLIFF, CRAIG	7	18	0	1	2	5	5	6	11	4	16	1	7	2	36:00	
40	VANHOOSE, J.R.	9	12	0	0	0	0	4	7	11	5	18	0	1	1	20:36	
12	TACKETT, TODD	5	11	1	5	1	2	0	1	1	4	12	4	2	0	32:19	
21	LYON, BRIAN	7	20	0	4	3	5	5	4	9	5	17	4	5	0	31:18	
10	RATLIFF, HAIT	0	3	0	3	1	2	1	4	5	3	1	1	3	0	27:31	
23	MCKENZIE, JOSH	0	0	0	0	2	2	0	2	2	0	2	0	2	0	8:42	
22	FRAZIER, JIM	0	1	0	1	0	0	0	1	1	0	0	0	1	0	6:42	
TEAM REBOUNDS (INCLUDED IN TOTALS)																	
TOTALS		30	70	2	17	9	16	17	25	42	22	71	13	21	5	11	180
Percentages: Game-----		FG		3-PT.		FT		3-PT.		FT		FT		FT		FT	
Period 1		6/17		35.3%		0/3		0.0%		2/4		50.0%					
Period 2		3/8		37.5%		0/3		0.0%		4/4		100.0%					
Period 3		9/21		42.9%		0/3		0.0%		0/0		0.0%					
Period 4		9/13		69.2%		0/0		0.0%		2/6		33.3%					
Period 5		3/11		27.3%		2/8		25.0%		1/2		50.0%					

HOME (Last Name, First)

NO.	MONTGOMERY COUNTY	Tot FG		3-POINT		FT	FTA	Rebounds			PF	TP	A	TO	BLK	S	TIME	
		FG	FGA	FG	FGA			OFF	DEF	TOT								
33	STEGER, RYAN	6	14	3	4	3	5	2	5	7	4	18	4	1	0	2	29:28	
45	RUDD, JEFF	1	5	0	0	5	8	4	7	11	4	7	0	3	0	1	27:26	
44	FAWNS, BILLY RAY	7	15	3	6	12	15	3	6	9	4	29	1	4	1	1	36:00	
20	HAMMONDS, KIRK	3	7	2	5	0	0	1	4	5	2	8	1	4	0	1	32:58	
23	CLEMONS, LEE	4	10	2	4	2	3	0	5	5	1	12	1	8	0	2	33:02	
15	WALKER, BRIAN	0	3	0	0	0	0	1	2	3	1	0	0	1	0	0	10:01	
30	TAYLOR, BRADLEY	0	0	0	0	2	2	0	0	0	0	2	1	2	0	1	11:05	
TEAM REBOUNDS (INCLUDED IN TOTALS)																		
TOTALS		21	54	10	19	24	33	13	29	42	16	78	8	23	1	8	180	
Percentages: Game-----		FG		3-PT.		FT		3-PT.		FT		FT		FT		FT		
Period 1		6/13		46.2%		5/8		62.5%		0/0		0.0%						
Period 2		5/14		35.7%		4/6		66.7%		4/6		66.7%						
Period 3		5/13		38.5%		0/2		0.0%		0/1		0.0%						
Period 4		4/11		36.4%		1/3		33.3%		6/10		60.0%						
Period 5		1/3		33.3%		0/0		0.0%		14/16		87.5%						

OFFICIALS: Roger Cross, Mike Ashurst, Jerry Hilpp-Alt
 Technicals: None

SCORE BY PERIODS

PAINTSVILLE	14	10	18	20	9	=	71
MONTGOMERY COUNTY	17	20	10	15	16	=	78

Attendance: 13,565

COMMENTS: PAINTSVILLE POINTS OFF TURNOVERS 24 MONTGOMERY COUNTY 20 PAINTSVILLE SECOND CHANCE POINTS 15 MONTGOMERY COUNTY 13

Produced by the KHSAA SWEET 16 Stat Crew with FINAL III - a Product of Stone Consulting (606)273-3941

***Montgomery County awarded 2 points on inadvertent tip by Paintsville

MONTGOMERY COUNTY					Time	Score	PAINTSVILLE	Player	Team		
STEGER, RYAN, RUDD, JEFF, FAWNS, BILLY RAY, HAMMONDS, KIRK, CLEMONS, LEE							SERGEANT, BRAD, RATLIFF, CRAIG, VANHOOSE, J.R., TACKETT, TODD, LYON, BRIAN				
1-1	100%	1-3	33.3%	3 pt 21 ft Right Side Jump shot by STEGER, RYAN	1 7:13	0-2*	Ball to TIGERS	1-1	100%	1-3	33.3%
1		1		Assist by HAMMONDS, KIRK	1 6:52	*3-2	Follow Layup by VANHOOSE, J.R.				
2-2	100%	2-4	50.0%	3 pt 22 ft Left Side Jump shot by STEGER, RYAN	1 6:40	3-4*	14 ft Lane Jump shot by SERGEANT, BRAD	1-1	100%	2-4	50.0%
1		2		Assist by CLEMONS, LEE	1 6:24	*6-4	Assist by TACKETT, TODD	1		1	
1-2	50.0%	3-6	50.0%	Sub In: WALKER, BRIAN Out: RUDD, JEFF	1 6:11	6-6*	7 ft Lane Driving by TACKETT, TODD	1-1	100%	3-5	60.0%
1		1		Follow Layup by TEAM	1 5:55						
				Sub In: TAYLOR, BRADLEY Out: HAMMONDS, KIRK	1 5:24	*8-6					
				Foul on STEGER, RYAN	1 5:01						
					1 4:58						
					1 4:44		RATLIFF, CRAIG, 1 Free Throw missed	0-1	00.0%	0-1	00.0%
					1 4:35	8-7*	RATLIFF, CRAIG, 1 Free Throw made	1-2	50.0%	1-2	50.0%
					1 4:09	8-9*	6 ft Lane Turnaround by VANHOOSE, J.R.	2-2	100%	4-7	57.1%
							Assist by SERGEANT, BRAD	1		2	
3-4	75.0%	4-11	36.3%	10 ft Left Angle Turnaround by STEGER, RYAN	1 3:31	*10-9					
2-4	50.0%	5-12	41.6%	3 pt 22 ft Right Side Jump shot by CLEMONS, LEE	1 3:09	10-11*	Follow Tip by LYON, BRIAN	1-4	25.0%	5-11	45.4%
1		3		Assist by STEGER, RYAN	1 2:42	*13-11					
1		2		Foul on WALKER, BRIAN	1 2:17	13-13*	6 ft Lane Follow by VANHOOSE, J.R.	3-4	75.0%	6-15	40.0%
					1 1:59						
					1 1:59		Sub In: RATLIFF, MATT Out: SERGEANT, BRAD				
					1 1:59		Sub In: MCKENZIE, JOSH Out: LYON, BRIAN				
					1 1:59						
					1 1:58						
					1 1:58	13-14*	TACKETT, TODD, 1 Free Throw made	1-1	100%	2-3	66.6%
					1 1:47		TACKETT, TODD, 1 Free Throw missed	1-2	50.0%	2-4	50.0%
1-1	100%	6-13	46.1%	3 pt 23 ft Left Side Jump shot by HAMMONDS, KIRK	1 1:41	*16-14					
1		3		Foul on HAMMONDS, KIRK	1 1:37						
4-5	80.0%	7-14	50.0%	3 pt 33 ft Left Angle Jump shot by STEGER, RYAN	1 1:37		Sub In: LYON, BRIAN Out: VANHOOSE, J.R.				
					1 0:00	*19-14					

PAINTSVILLE "TIGERS" vs MONTGOMERY COUNTY "INDIANS"
1st Half Play by Play

PAGE : 2

Tip off at 2:30 P.M. on 03/16/95 at BOY'S SWEET 16, LEXINGTON
Produced by the KHSAA SWEET 16 Stat Crew with FINAL III
Final III is a product of STONE CONSULTING SERVICE (606)273-3941

Player	Team	MONTGOMERY COUNTY	Time	Score	PAINTSVILLE	Player	Team
STEGER, RYAN, RUDD, JEFF, FAWNS, BILLY RAY, HAMMONDS, KIRK, CLEMONS, LEE					RATLIFF, CRAIG, RATLIFF, MATT, FRAZIER, JIM, VANHOOSE, J.R., LYON, BRIAN		
1-3	33.3%	8-15 53.3%	3 pt	22 ft Left Base Line Jump shot by FAWNS, BILLY RAY Assist by STEGER, RYAN	2 7:48	*22-14	
2	4			Foul on STEGER, RYAN	2 7:26		
2-4	50.0%	9-16 56.2%	3 pt	22 ft Left Side Jump shot by FAWNS, BILLY RAY Assist by STEGER, RYAN	2 7:26	22-16*	LYON, BRIAN, 2 Free Throws made both
3	5			Sub In: WALKER, BRIAN Out: STEGER, RYAN	2 7:17	*25-16	
REB: 12 A: 5 BLK: 0 TO: 6 PF: 4 S: 2 FT: 0-0 00.0% FG: 9-19 47.3%			No. 1 MONTGOMERY COUNTY		REB: 12 A: 2 BLK: 2 TO: 4 PF: 1 S: 4 FT: 4-6 66.6% FG: 7-20 35.0%		
Sub In: TACKETT, TODD Out: FRAZIER, JIM			2 5:38				
1-2	50.0%	1-2 50.0%		RUDD, JEFF, 2 Free Throws made 1st missed 2nd Sub In: TAYLOR, BRADLEY Out: CLEMONS, LEE	2 5:00	*26-18	
2-3	66.6%	10-22 45.4%	3 pt	22 ft Right Side Jump shot by HAMMONDS, KIRK Assist by TAYLOR, BRADLEY	2 5:00		
1	6			Sub In: CLEMONS, LEE Out: WALKER, BRIAN	2 4:06	*29-18	
Sub In: VANHOOSE, J.R.			2 3:08				
2-4	50.0%	2-4 50.0%		RUDD, JEFF, 2 Free Throws missed 1st made 2nd Sub In: STEGER, RYAN Out: RUDD, JEFF	2 3:08		
Sub In: SERGENT, BRAD Out: RATLIFF, MATT			2 3:08				
2-2	100%	4-6 66.6%		FAWNS, BILLY RAY, 2 Free Throws made both Foul on STEGER, RYAN Sub In: RUDD, JEFF Out: STEGER, RYAN	2 3:08	*30-18	
Sub In: VANHOOSE, J.R.			2 2:56		30-20* Follow Layup by VANHOOSE, J.R.		
Sub In: MCKENZIE, JOSH Out: VANHOOSE, J.R.			2 2:36				
3-6	50.0%	11-24 45.8%	3 pt	20 ft Right Side Jump shot by CLEMONS, LEE Assist by FAWNS, BILLY RAY	2 2:36	*32-20	
Sub In: RATLIFF, MATT Out: SERGENT, BRAD			2 2:27				
1	6			Foul on RUDD, JEFF	2 2:27		
Sub In: RATLIFF, MATT Out: SERGENT, BRAD			2 1:58				
Sub In: FRAZIER, JIM Out: LYON, BRIAN			2 1:58		*35-20		
Sub In: TACKETT, TODD			2 1:04				
1-4	25.0%	12-27 44.4%		Driving Layup by RUDD, JEFF Foul on RUDD, JEFF Sub In: WALKER, BRIAN Out: RUDD, JEFF	2 1:04		
Sub In: VANHOOSE, J.R.			2 1:01				
Sub In: MCKENZIE, JOSH Out: VANHOOSE, J.R.			2 0:52		35-22* 4 ft Lane Turnaround by RATLIFF, CRAIG Assist by TACKETT, TODD		
Sub In: RATLIFF, MATT			2 0:30		*37-22		
Sub In: MCKENZIE, JOSH, 1 & Bonus made both Rebound by RATLIFF, MATT			2 0:17				
Sub In: MCKENZIE, JOSH, 1 & Bonus made both Rebound by RATLIFF, MATT			2 0:17				
Sub In: MCKENZIE, JOSH, 1 & Bonus made both Rebound by RATLIFF, MATT			2 0:17				
Sub In: MCKENZIE, JOSH, 1 & Bonus made both Rebound by RATLIFF, MATT			2 0:00				

OFFICIAL NFSHSA BASKETBALL BOX SCORE: * OFFICIAL FIRST HALF *
 Date: 03-16-95 Site: BOY'S SWEET 16, LEXINGTON

VISITORS (Last Name, First)

NO.	PAINTSVILLE	Tot FG		3-POINT		FT	FTA	Rebounds			PF	TP	A	TO	BLK	S	TIME
		FG	FGA	FG	FGA			OFF	DEF	TOT							
32	SERGEANT, BRAD	1	3	0	1	0	0	0	0	0	2	1	0	0	0	7:11	
34	RATLIFF, CRAIG	2	5	0	0	1	2	0	2	2	1	0	1	1	3	16:00	
40	VANHOOSE, J.R.	4	6	0	0	0	0	4	2	6	2	0	1	1	0	11:47	
12	TACKETT, TODD	1	2	0	1	1	2	0	0	0	0	2	1	0	0	13:38	
21	LYON, BRIAN	1	8	0	3	2	2	3	1	4	1	0	2	0	2	14:34	
10	RATLIFF, MATT	0	1	0	1	0	0	1	3	4	1	0	1	0	0	8:49	
23	MCKENZIE, JOSH	0	0	0	0	2	2	0	0	0	0	0	1	0	0	4:35	
22	FRAZIER, JIM	0	0	0	0	0	0	0	1	1	0	0	1	0	0	3:26	
TEAM REBOUNDS (INCLUDED IN TOTALS)																	
TOTALS		9	25	0	6	6	8	8	9	17	5	24	3	8	2	5	80

Percentages: HALF----- FG 9/25 36.0% 3-PT. 0/6 0.0% FT 6/8 75.0%
 Period 1 6/17 35.3% 0/3 0.0% 2/4 50.0%
 Period 2 3/8 37.5% 0/3 0.0% 4/4 100.0%

HOME (Last Name, First)

NO.	MONTGOMERY COUNTY	Tot FG		3-POINT		FT	FTA	Rebounds			PF	TP	A	TO	BLK	S	TIME
		FG	FGA	FG	FGA			OFF	DEF	TOT							
33	STEGER, RYAN	4	5	3	3	0	0	0	0	0	3	11	3	0	0	1	9:28
45	RUDD, JEFF	1	4	0	0	2	4	3	3	6	2	4	0	2	0	1	11:18
44	FAWNS, BILLY RAY	2	6	2	4	2	2	1	3	4	0	8	1	1	0	0	16:00
20	HAMMONDS, KIRK	2	4	2	3	0	0	0	1	1	1	6	1	2	0	1	12:58
23	CLEMONS, LEE	2	6	2	4	0	0	0	2	2	0	6	1	0	0	1	14:08
15	WALKER, BRIAN	0	2	0	0	0	0	1	0	1	1	0	0	1	0	0	8:05
30	TAYLOR, BRADLEY	0	0	0	0	0	0	0	0	0	0	0	1	1	0	1	8:03
TEAM REBOUNDS (INCLUDED IN TOTALS)																	
TOTALS		11	27	9	14	4	6	8	9	17	7	37	7	7	0	5	80

Percentages: HALF----- FG 11/27 40.7% 3-PT. 9/14 64.3% FT 4/6 66.7%
 Period 1 7/14 50.0% 5/8 62.5% 0/0 0.0%
 Period 2 5/14 35.7% 4/6 66.7% 4/6 66.7%

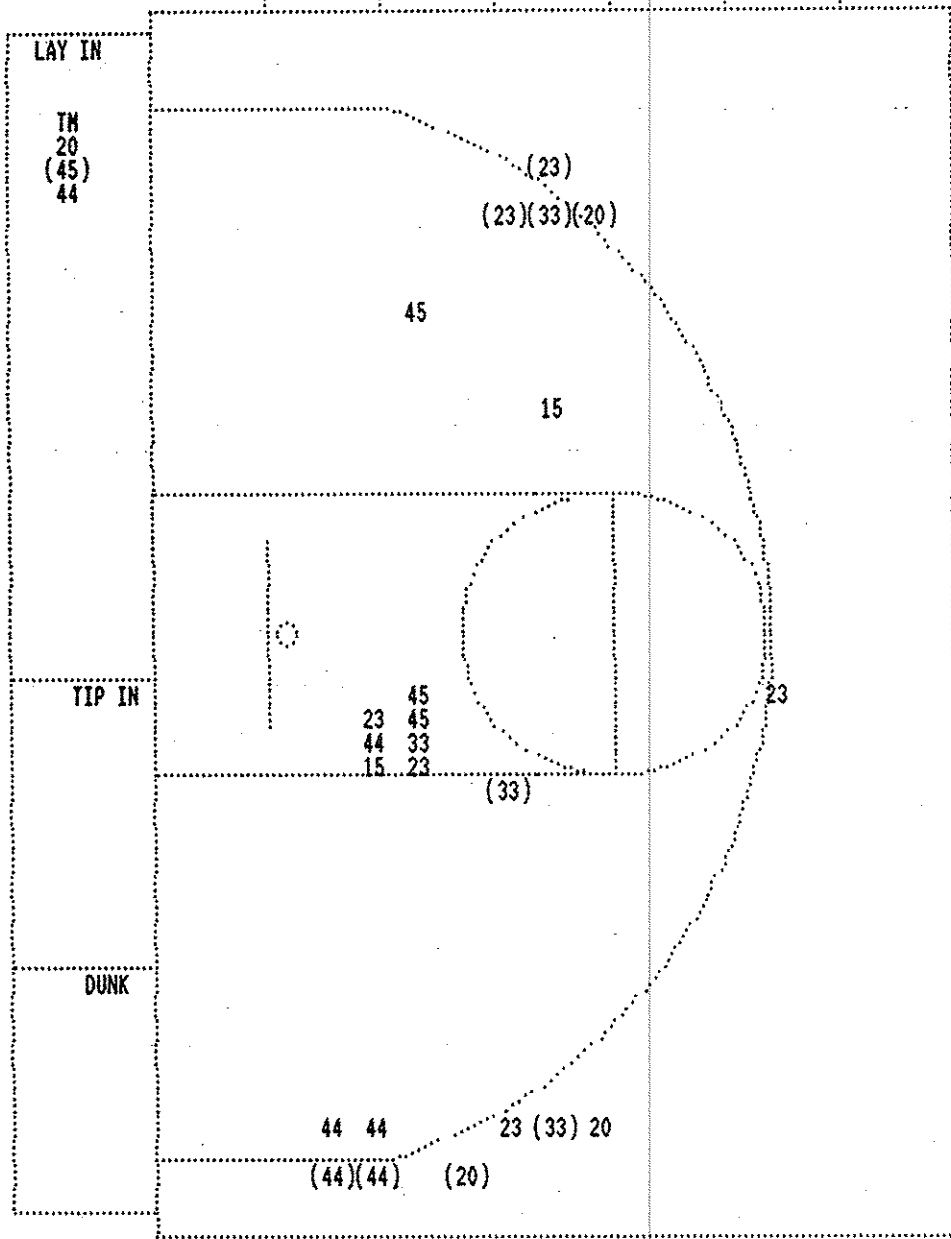
OFFICIALS: Roger Cross, Mike Ashurst, Jerry Hilpp-Alt
 Technicals: None

SCORE BY PERIODS

PAINTSVILLE	14	10	=	24
MONTGOMERY COUNTY	19	18	=	37

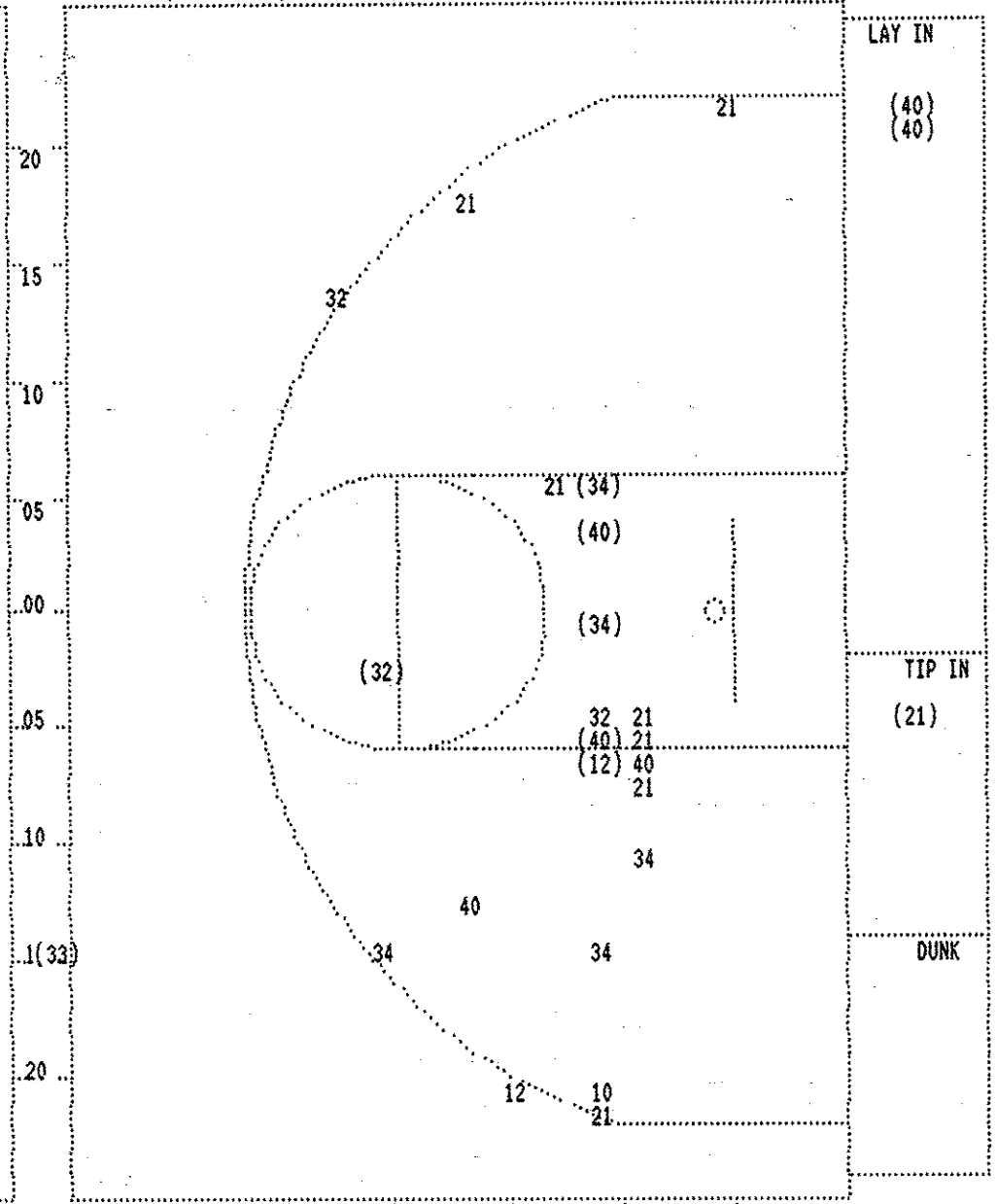
Attendance: 13,565

COMMENTS: PAINTSVILLE 6 MONTGOMERY COUNTY 14 PAINTSVILLE 8 MONTGOMERY COUNTY 8
 POINTS OFF TURNOVERS SECOND CHANCE POINTS
 Produced by the KNSAA SWEET 16 Stat Crew with FINAL III - a Product of Stone Consulting (606)273-3941



MONTGOMERY COUNTY

Player	Player	Player
33 - STEGER, RY 4/ 5 80.0%	15 - WALKER, BR 0/ 2 0.0%	
45 - RUDD, JEFF 1/ 4 25.0%		
44 - FAWNS, BILL 2/ 6 33.3%		
20 - HAMMONDS, 2/ 4 50.0%		
23 - CLEMONS, L 2/ 6 33.3%		
Layups 1-9 Ft 10-15 Ft Over 15 Ft 3 Pointers Total		
1 / 4 0 / 7 1 / 3 9 / 14 11 / 28		
25.0% 0.0% 33.3% 64.3% 39.3%		



PAINTSVILLE

Player	Player	Player
32 - SERGENT, B 1/ 3 33.3%	10 - RATLIFF, M 0/ 1 0.0%	
34 - RATLIFF, C 2/ 5 40.0%		
40 - VANHOOSE, 4/ 6 66.6%		
12 - TACKETT, T 1/ 2 50.0%		
21 - LYON, BRIA 1/ 8 12.5%		
Layups 1-9 Ft 10-15 Ft Over 15 Ft 3 Pointers Total		
3 / 3 5 / 11 1 / 3 0 / 2 0 / 6 9 / 25		
100.0% 45.5% 33.3% 0.0% 0.0% 36.0%		

PAINTSVILLE "TIGERS" vs MONTGOMERY COUNTY "INDIANS"
2nd Half Play by Play

PAGE : 1

Tip off at 2:30 P.M. on 03/16/95 at BOY'S SWEET 16, LEXINGTON
Produced by the KHSAA SWEET 16 Stat Crew with FINAL III
Final III is a product of STONE CONSULTING SERVICE (606)273-3941

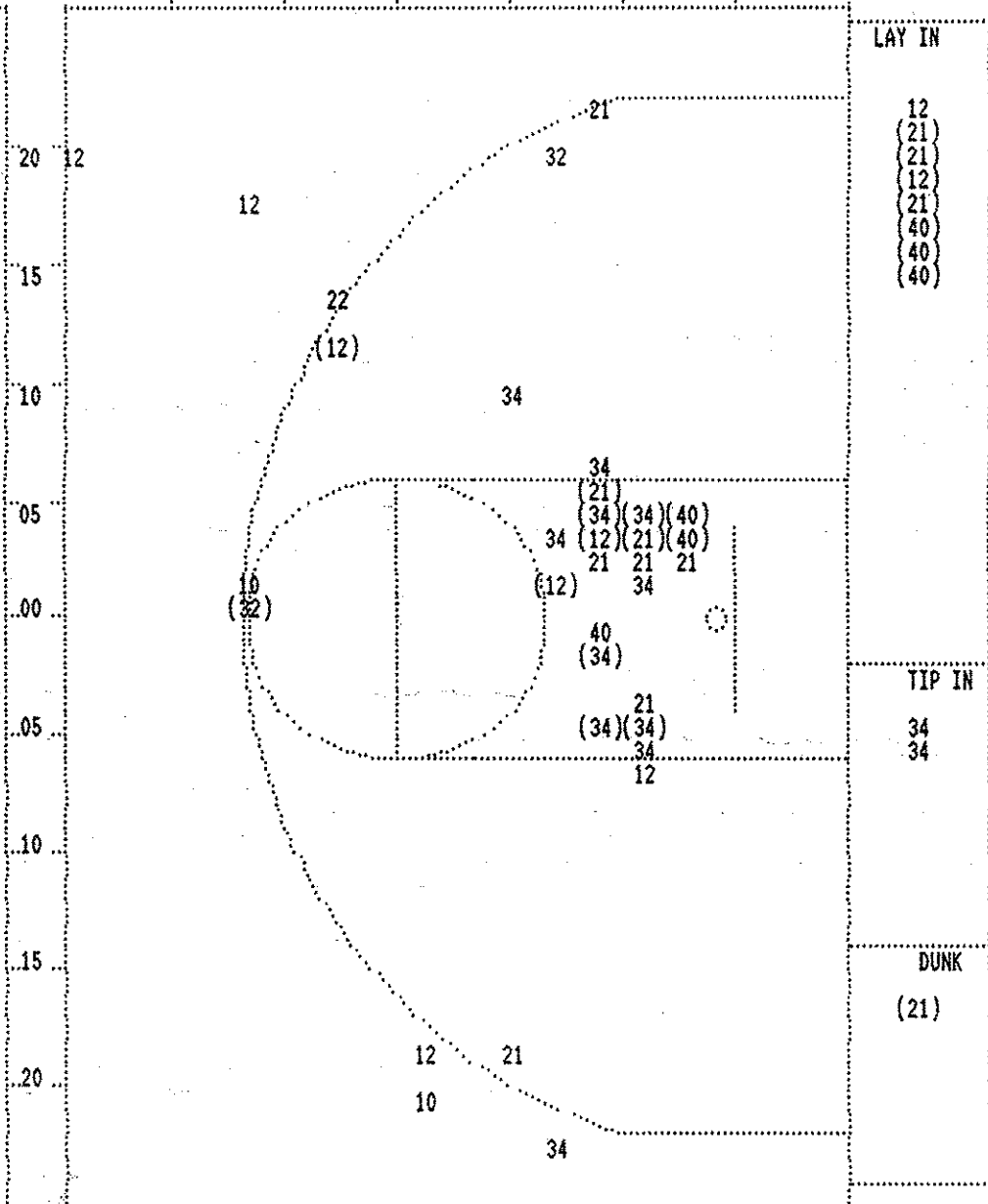
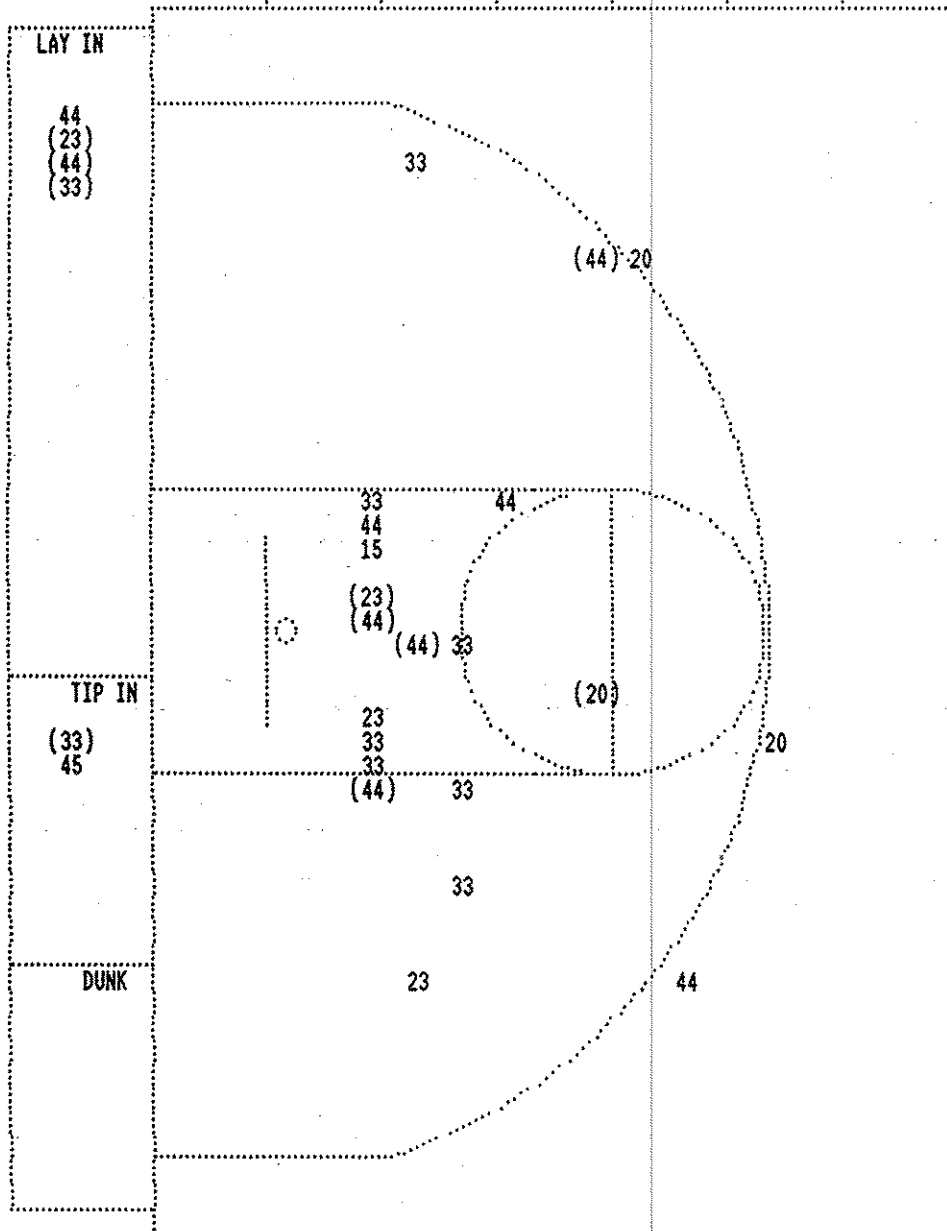
Player	Team	MONTGOMERY COUNTY
STEGER, RYAN, RUDD, JEFF, FAWNS, BILLY RAY, HAMMONDS, KIRK, CLEMONS, LEE		
1	1	Foul on FAWNS, BILLY RAY
2	2	Foul on HAMMONDS, KIRK
3-7	42.8%	12-29 41.3%
3 ft Lane Driving by CLEMONS, LEE		
3-8	37.5%	13-30 43.3%
3 ft Lane Driving by FAWNS, BILLY RAY		
2-3	66.6%	4-7 57.1%
FAWNS, BILLY RAY, 1 Free Throw missed		
Sub In: TAYLOR, BRADLEY Out: CLEMONS, LEE		
4-10	40.0%	14-33 42.4%
3	3	6 ft Left Side Bank by FAWNS, BILLY RAY
Foul on RUDD, JEFF		
Sub In: WALKER, BRIAN Out: RUDD, JEFF		
5-7	71.4%	15-35 42.8%
Follow Tip by STEGER, RYAN		
Sub In: CLEMONS, LEE Out: WALKER, BRIAN		
Sub In: RUDD, JEFF Out: TAYLOR, BRADLEY		
4-9	44.4%	16-38 42.1%
Driving Layup by CLEMONS, LEE		
2	4	Player Control Foul on FAWNS, BILLY RAY
REB: 24 A: 7 BLK: 1 TO: 14 PF: 4		
S: 5 FT: 4-7 57.1% FG: 16-40 40.0%		

Time	Score	PAINTSVILLE	Player	Team
RATLIFF, MATT, TACKETT, TODD, VANHOOSE, J.R., RATLIFF, CRAIG, FRAZIER, JIM				
Ball to TIGERS				
3	7:12			
3	6:55			
3	6:50	35-26*	4 ft Lane Follow by RATLIFF, CRAIG	3-6 50.0% 10-28 35.7%
3	6:35	*37-26		
3	6:19		Sub In: LYON, BRIAN Out: FRAZIER, JIM	
3	5:56	*39-26		
3	5:56		Foul on VANHOOSE, J.R.	3 1
3	5:56			
3	5:36		Sub In: MCKENZIE, JOSH Out: VANHOOSE, J.R.	
3	5:36	39-28*	4 ft Lane Bank by LYON, BRIAN	2-10 20.0% 11-31 35.4%
3	4:58	39-30*	6 ft Lane Turnaround by TACKETT, TODD	2-4 50.0% 12-32 37.5%
3	4:40			
3	4:24		Foul on LYON, BRIAN	2 2
3	4:20	*41-30		
3	4:06			
3	4:06		Sub In: SERGENT, BRAD Out: RATLIFF, MATT	
3	4:06			
3	3:48	*43-30		
3	3:34			
3	3:11	43-32*	4 ft Lane Follow by RATLIFF, CRAIG	4-12 33.3% 13-39 33.3%
3	2:48		Sub In: RATLIFF, MATT Out: TACKETT, TODD	
3	2:48	43-34*	7 ft Left Side Turnaround by LYON, BRIAN	3-13 23.0% 14-41 34.1%
Assist by SERGENT, BRAD				
3	2:22			
3	2:22	*45-34		
3	1:58	45-36*	Follow Layup by LYON, BRIAN	4-14 28.5% 15-43 34.8%
3	1:39			
3	1:29		Sub In: TACKETT, TODD Out: MCKENZIE, JOSH	
3	1:13	45-38*	Layup Off Fast Break by LYON, BRIAN	5-15 33.3% 16-44 36.3%
3	0:46	45-40*	Dunk Off Fast Break by LYON, BRIAN	6-16 37.5% 17-45 37.7%
3	0:43			
No. 1 MONTGOMERY COUNTY TIME - O U T				
REB: 30 A: 4 BLK: 4 TO: 13 PF: 2				
S: 7 FT: 6-8 75.0% FG: 17-45 37.7%				
3	0:43		Sub In: FRAZIER, JIM Out: LYON, BRIAN	
3	0:20		Sub In: LYON, BRIAN Out: FRAZIER, JIM	
3	0:15	45-42*	Driving Layup by TACKETT, TODD	3-5 60.0% 18-46 39.1%
3	0:09		Foul on LYON, BRIAN	3 3
3	0:09		Sub In: FRAZIER, JIM Out: LYON, BRIAN	

Player	Team	MONTGOMERY COUNTY	Time	Score	PAINTSVILLE	Player	Team
STEGER, RYAN, RUDD, JEFF		FAWNS, BILLY RAY, HAMMONDS, KIRK, CLEMONS, LEE			SERGEANT, BRAD, RATLIFF, CRAIG, RATLIFF, MATT, TACKETT, TODD, LYON, BRIAN		
		Ball to INDIANS					
3	5	Foul on FAWNS, BILLY RAY Sub In: WALKER, BRIAN Out: RUDD, JEFF	4 7:45	45-44*	4 ft Lane Jump shot by RATLIFF, CRAIG Assist by SERGEANT, BRAD	5-14	35.7% 19-47 40.4% 3 5
			4 7:44				
			4 7:44				
			4 7:44		RATLIFF, CRAIG, 1 Free Throw missed	1-3	33.3% 6-9 66.6% 2 4
			4 7:24		Foul on RATLIFF, CRAIG		
3-5	60.0% 5-9 55.5%	FAWNS, BILLY RAY, 2 Free Throws missed 1st made 2nd	4 7:24	*46-44			
			4 7:07	46-46*	Turnaround Layup by LYON, BRIAN Assist by TACKETT, TODD	7-17	41.1% 20-48 41.6% 3 6
			4 7:06				
			4 7:06		Sub In: VANHOOSE, J.R. Out: SERGEANT, BRAD		
			4 7:06		LYON, BRIAN, 1 Free Throw missed	2-3	66.6% 6-10 60.0% 3 5
			4 6:57		Foul on RATLIFF, CRAIG		
5-7	71.4% 7-11 63.6%	FAWNS, BILLY RAY, 2 Free Throws made both	4 6:57	*48-46			
			4 6:47	48-48*	Driving Layup by VANHOOSE, J.R. Assist by RATLIFF, CRAIG	5-8	62.5% 21-49 42.8% 1 7
			4 6:28		Foul on TACKETT, TODD	1	6
6-9	66.6% 8-13 61.5%	FAWNS, BILLY RAY, 2 Free Throws made 1st missed 2nd Sub In: RUDD, JEFF Out: WALKER, BRIAN	4 6:28	*49-48			
			4 6:28				
5-11	45.4% 17-42 40.4%	4 ft Lane Jump shot by FAWNS, BILLY RAY	4 6:02	*51-48			
			4 5:53	51-50*	6 ft Lane Driving by TACKETT, TODD	4-6	66.6% 22-51 43.1%
			4 5:33	51-52*	4 ft Lane Turnaround by VANHOOSE, J.R. Assist by TACKETT, TODD	6-9	66.6% 23-52 44.2% 4 8
3-6	50.0% 18-43 41.8%	12 ft Lane Jump shot by HAMMONDS, KIRK Assist by STEGER, RYAN	4 5:15	*53-52			
4	8		4 4:20	53-54*	Driving Layup by VANHOOSE, J.R. Assist by LYON, BRIAN	7-10	70.0% 24-54 44.4% 1 9
			4 3:18		Foul on VANHOOSE, J.R.	4	7
8-11	72.7% 10-15 66.6%	FAWNS, BILLY RAY, 1 & Bonus made both	4 3:18	*55-54			
			4 2:45	55-56*	4 ft Lane Turnaround by RATLIFF, CRAIG Assist by LYON, BRIAN	6-16	37.5% 25-57 43.8% 2 10
			4 2:23				
		REB: 33 A: 8 BLK: 1 TO: 22 PF: 6 S: 6 FT: 10-15 66.6% FG: 18-47 38.2%			REB: 33 A: 10 BLK: 5 TO: 17 PF: 7 S: 11 FT: 6-10 60.0% FG: 25-57 43.8%		
		No. 2 MONTGOMERY COUNTY			T I M E - O U T		
6-13	46.1% 19-48 39.5%	Driving Layup by FAWNS, BILLY RAY	4 2:14	*57-56			
			4 2:00	57-58*	4 ft Lane Turnaround by VANHOOSE, J.R.	8-11	72.7% 26-58 44.8%
		Sub In: TAYLOR, BRADLEY Out: RUDD, JEFF	4 1:35				
		Sub In: RUDD, JEFF Out: TAYLOR, BRADLEY	4 1:30				
			4 1:23	57-60*	Layup Off Fast Break by VANHOOSE, J.R. Assist by LYON, BRIAN	9-12	75.0% 27-59 45.7% 3 11
			4 0:41		Foul on VANHOOSE, J.R.	5	8
			4 0:41		Sub In: SERGEANT, BRAD Out: VANHOOSE, J.R.		
		REB: 33 A: 8 BLK: 1 TO: 23 PF: 6 S: 7 FT: 10-15 66.6% FG: 19-50 38.0%			REB: 35 A: 11 BLK: 5 TO: 19 PF: 8 S: 11 FT: 6-10 60.0% FG: 27-59 45.7%		
		T I M E - O U T			PAINTSVILLE No. 1		
0-2	00.0% 10-17 58.8%	STEGER, RYAN, 2 Free Throws missed both	4 0:41				
4	7	Foul on RUDD, JEFF	4 0:28				
			4 0:28	59-61*	RATLIFF, CRAIG, 2 Free Throws made 1st missed 2nd	2-5	40.0% 7-12 58.3%
		Foul on STEGER, RYAN	4 0:21				
			4 0:21	59-62*	LYON, BRIAN, 1 & Bonus made 1st missed 2nd	3-5	60.0% 8-14 57.1%
7-14	50.0% 20-51 39.2%	3 pt 20 ft Right Side Jump shot by FAWNS, BILLY RAY	4 0:11	*62-62			
			4 0:06				
		REB: 34 A: 8 BLK: 1 TO: 23 PF: 8 S: 7 FT: 10-17 58.8% FG: 20-51 39.2%			REB: 37 A: 11 BLK: 5 TO: 19 PF: 8 S: 11 FT: 8-14 57.1% FG: 27-59 45.7%		
		T I M E - O U T			PAINTSVILLE No. 2		

Player	Team	MONTGOMERY COUNTY	Time	Score	PAINTSVILLE	Player	Team
1	8	Steal by FAWNS,BILLY RAY	4	0:00			
			4	0:00	Bad Pass by RATLIFF, MATT	3	20

Player	Team	MONTGOMERY COUNTY	Time	Score	PAINTSVILLE	Player	Team
FAWNS,BILLY RAY,STEGER, RYAN,CLEMONS, LEE,RUDD, JEFF,HAMMONDS, KIRK					RATLIFF, MATT,TACKETT, TODD,LYON, BRIAN,SERGEANT, BRAD,RATLIFF, CRAIG		
			5 3:12	62-64*	Ball to TIGERS	7-17	41.1% 28-61 45.9%
			5 2:23		6 ft Lane Bank by RATLIFF, CRAIG	4	12
			5 2:23	*64-64	Assist by LYON, BRIAN	2	9
4-6 66.6% 12-19 63.1%		RUDD, JEFF, 2 Free Throws made both	5 1:39				
		REB: 36 A: 8 BLK: 1 TO: 23 PF: 8	No. 1 MONTGOMERY COUNTY T I M E - O U T		REB: 38 A: 12 BLK: 5 TO: 20 PF: 9		
		S: 8 FT: 12-19 63.1% FG: 20-52 38.4%			S: 11 FT: 8-14 57.1% FG: 28-62 45.1%		
6-14 42.8% 21-54 38.8%		Sub In: TAYLOR, BRADLEY Out: RUDD, JEFF	5 1:29	*66-64			
		Follow Layup by STEGER, RYAN	5 1:29		Foul on LYON, BRIAN	4	10
1-3 33.3% 13-20 65.0%		Sub In: RUDD, JEFF Out: TAYLOR, BRADLEY	5 1:29				
		STEGER, RYAN, 1 Free Throw made	5 1:29	*67-64			
5-8 62.5% 14-22 63.6%		RUDD, JEFF, 2 Free Throws made 1st missed 2nd	5 1:03		Foul on LYON, BRIAN	5	11
		Foul on CLEMONS, LEE	5 1:03		Sub In: FRAZIER, JIM Out: LYON, BRIAN		
		Sub In: TAYLOR, BRADLEY Out: RUDD, JEFF	5 1:03	*68-64			
0-1 00.0% 14-23 60.8%		Sub In: RUDD, JEFF Out: TAYLOR, BRADLEY	5 1:01				
		CLEMONS, LEE, 1 & Bonus missed 1st	5 1:01	68-65*	RATLIFF, MATT, 1 & Bonus made 1st missed 2nd	1-2	50.0% 9-16 56.2%
		Sub In: WALKER, BRIAN Out: RUDD, JEFF	5 1:00		Foul on TACKETT, TODD	2	12
			5 1:00				
			5 0:36		Foul on RATLIFF, MATT	3	13
			5 0:36				
10-13 76.9% 16-25 64.0%		FAWNS,BILLY RAY, 1 & Bonus made both	T I M E - O U T PAINTSVILLE No. 1		REB: 41 A: 12 BLK: 5 TO: 20 PF: 13		
		REB: 40 A: 8 BLK: 1 TO: 23 PF: 9	5 0:36	*70-65	S: 11 FT: 9-16 56.2% FG: 28-65 43.0%		
		S: 8 FT: 14-23 60.8% FG: 21-54 38.8%	5 0:30	70-68*	3 pt 20 ft Circle Jump shot by SERGEANT, BRAD	2-5	40.0% 29-66 43.9%
					Assist by RATLIFF, MATT	1	13
			T I M E - O U T PAINTSVILLE No. 2		REB: 41 A: 13 BLK: 5 TO: 20 PF: 13		
			5 0:28		S: 11 FT: 9-16 56.2% FG: 29-66 43.9%		
		Sub In: TAYLOR, BRADLEY Out: WALKER, BRIAN	5 0:25				
2-2 100% 18-27 66.6%		TAYLOR, BRADLEY, 1 & Bonus made both	5 0:25	*72-68	Foul on TACKETT, TODD	3	14
3-5 60.0% 20-29 68.9%		STEGER, RYAN, 1 & Bonus made both	5 0:24		Foul on TACKETT, TODD	4	15
			5 0:24	*74-68			
			5 0:19	74-71*	3 pt 20 ft Left Angle Jump shot by TACKETT, TODD	5-8	62.5% 30-67 44.7%
			5 0:14		Foul on SERGEANT, BRAD	1	16
12-15 80.0% 22-31 70.9%		FAWNS,BILLY RAY, 1 & Bonus made both	5 0:14	*76-71			
		REB: 40 A: 8 BLK: 1 TO: 23 PF: 9	No. 2 MONTGOMERY COUNTY T I M E - O U T		REB: 41 A: 13 BLK: 5 TO: 21 PF: 16		
		S: 8 FT: 22-31 70.9% FG: 21-54 38.8%	5 0:08		Foul on RATLIFF, CRAIG	4	17
2-3 66.6% 24-33 72.7%		CLEMONS, LEE, 1 & Bonus made both	5 0:08	*78-71			
			5 0:00		3 pt 22 ft Right Side Jump shot by		
					TACKETT, TODD, missed	5-11	45.4% 30-70 42.8%
D-1 Tot-1 D-1 Tot-42		Rebound by FAWNS,BILLY RAY	5 0:00				



MONTGOMERY COUNTY					
Player			Player		
33 - STEGER, RY	2 / 9	22.2%	15 - WALKER, BR	0 / 1	0.0%
45 - RUDD, JEFF	0 / 1	0.0%			
44 - FAWNS, BILL	5 / 9	55.5%			
20 - HAMMONDS, L	1 / 3	33.3%			
23 - CLEMONS, L	2 / 4	50.0%			
Layups	1-9 Ft	10-15 Ft	Over 15 Ft	3 Pointers	Total
4 / 6	4 / 12	1 / 4	1 / 5	10 / 27	
66.7%	33.3%	25.0%	20.0%	37.0%	

PAINTSVILLE					
Player			Player		
32 - SERGENT, B	1 / 2	50.0%	10 - RATLIFF, M	0 / 2	0.0%
34 - RATLIFF, C	5 / 13	38.4%	22 - FRAZIER, J	0 / 1	0.0%
40 - VANHOUSE, C	5 / 6	83.3%			
12 - YACKETT, T	4 / 9	44.4%			
21 - LYON, BRIA	6 / 12	50.0%			
Layups	1-9 Ft	10-15 Ft	Over 15 Ft	3 Pointers	Total
8 / 11	11 / 21	0 / 1	0 / 1	2 / 11	21 / 45
72.7%	52.4%	0.0%	0.0%	18.2%	46.7%